



KARBON NÖTR ŞEHİR KONYA



Amacımız;

Acil Bir Krizi Tarihi Fırsata Dönüştürmek» değil, iklim krizine ortak akılla geliştirilmiş, tüm şehrin sahip çıkacağı özel bir paket çözüm serisi üretmek.
Bu yolla globale yayılacak adil bir dönüşüm hareketinin öncüsü olmak.

Vizyonumuz;

2042 yılında Konya'yı Avrupa'nın ilk karbon nötr şehri yapmak
İşbirliği İçinde Olduğumuz Kurumlarımız;



TÜRKİYE CUMHURİYETİ
ÇEVRE, ŞEHİRCİLİK VE
İKLİM DEĞİŞİKLİĞİ BAKANLIĞI



KONYA
BÜYÜKŞEHİR
BELEDİYESİ



KONYA
TİCARET ODASI



KONYA
SANAYİ ODASI



KONYA
TİCARET
BORSASI



Mevlana
Kalkınma Ajansı
Development Agency



KTO KARATAY
ÜNİVERSİTESİ



KOSAM

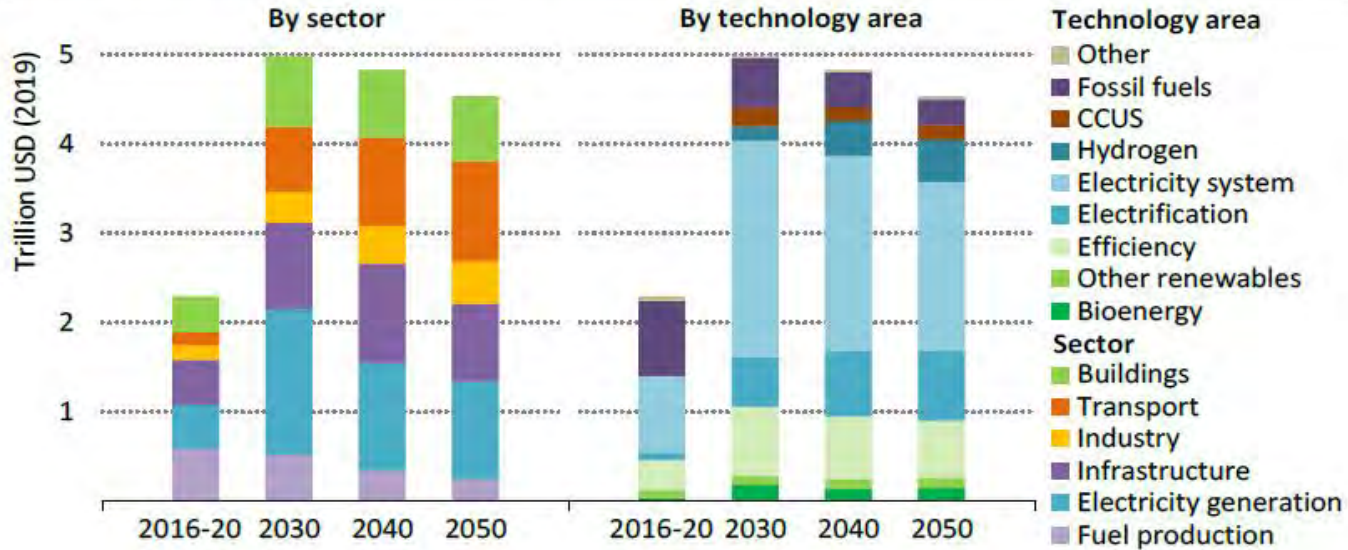


Yola Çıkışımız;

2050 yılına kadar NET ZERO – Karbonsuz bir ekonomik ve sosyal modele geçilmesi durumunda; global olarak yıllık ortalama 4,5 trilyon USD olmak üzere, toplamda 120 trilyon USD'nin üstünde sermayegerektiren sektörel yatırımların yapılması beklenmektedir.

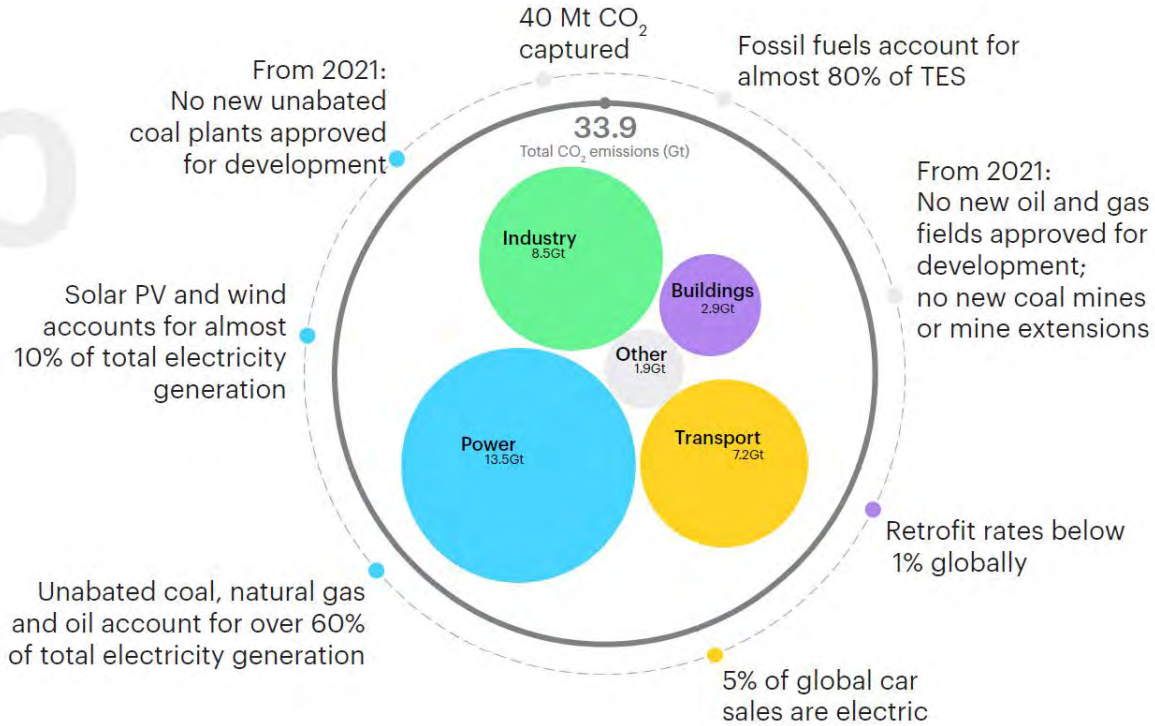
Konya için bu rakamın yıllık 2 milyar USD seviyelerini bulması beklenmektedir.

Figure 2.22 ▶ Annual average capital investment in the NZE

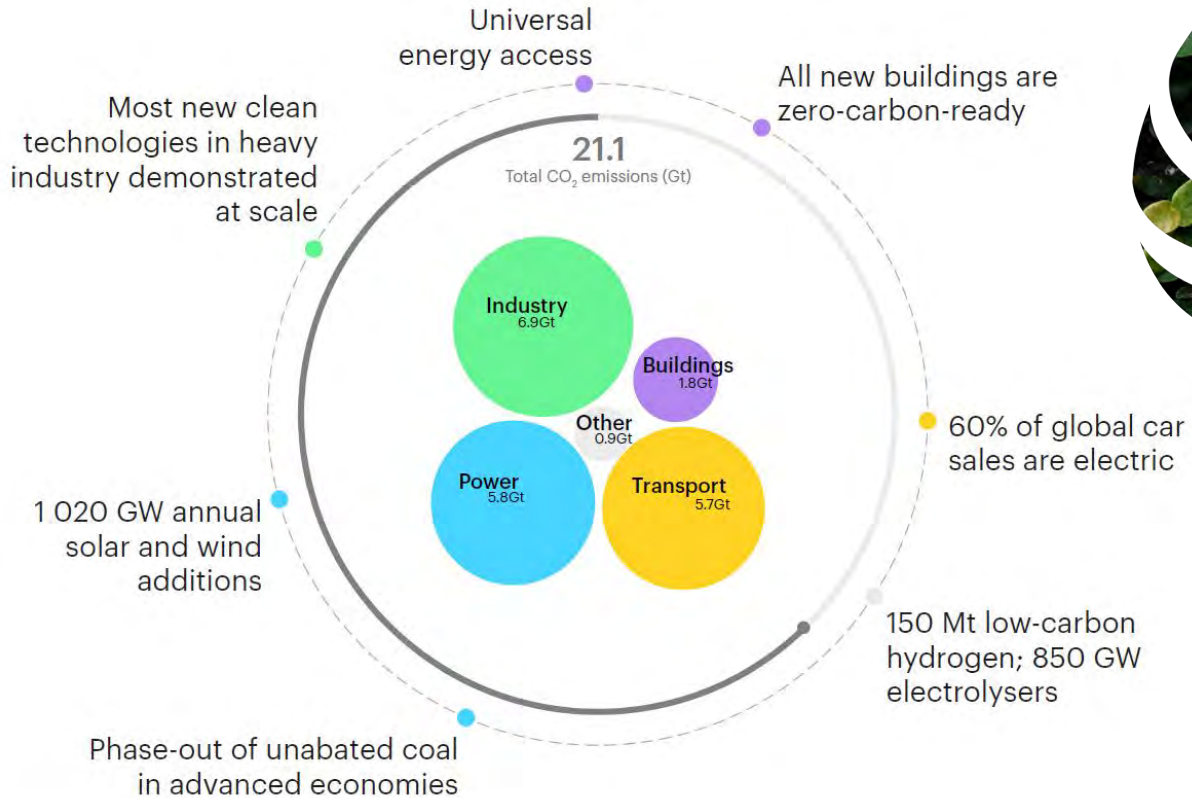


2020 Sonu İtibariyle Karbon Salımı Kaynakların Dağılımı

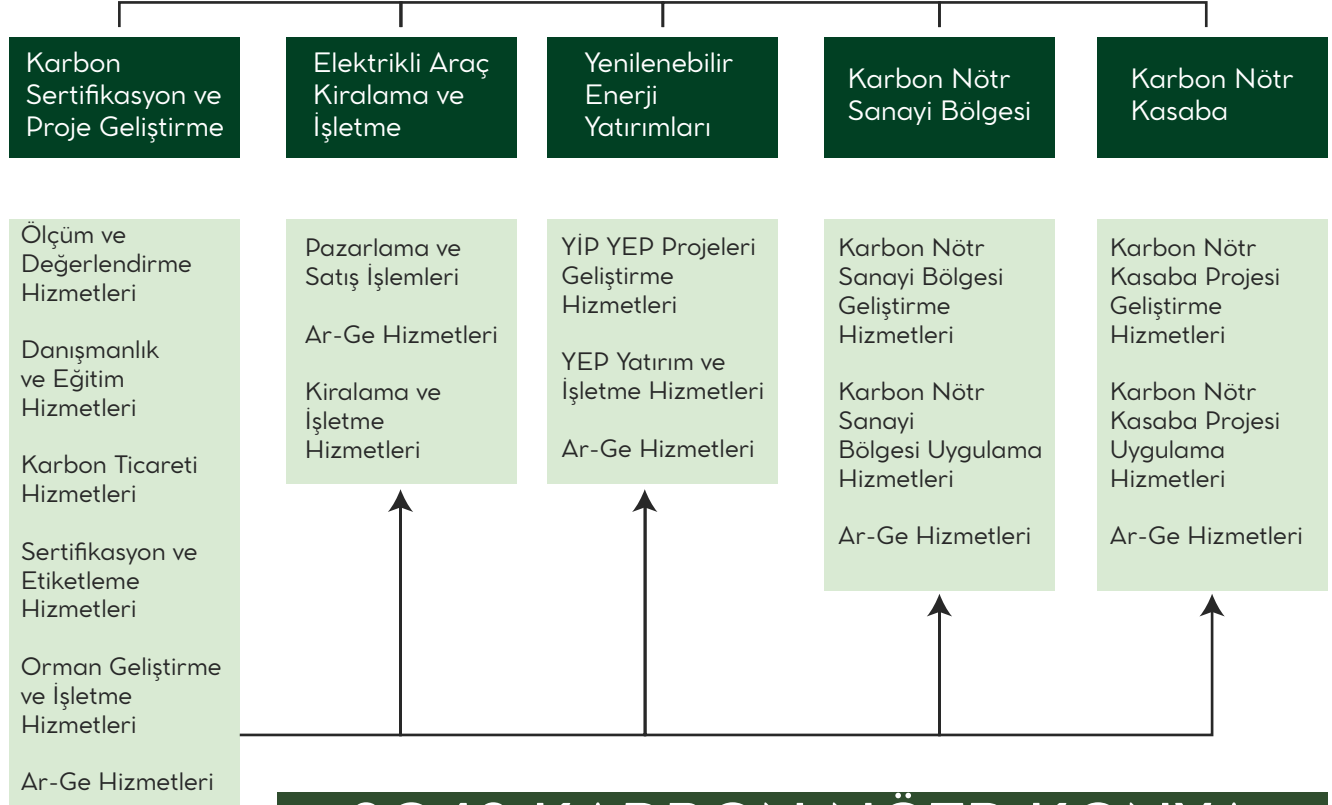
%95 Oranında Etkileyen Faktörler
1.Elektrik Üretimi
2.Endüstriyel Tesisler
3.Ulaşım ve Lojistik
4.Binalar



2030 Sonu İtibariyle Karbon Salımı Kaynakların Dağılımı



Karbon Sertifikasyon ve Proje Geliştirme A.Ş.



2042 KARBON NÖTR KONYA

Uygulama Planımız;

Temel amaç 2042 Karbon Nötr Konya hedefine uygun hizmet etmeyi sağlamaktır.

Karbon Sertifikasyon ve Proje Geliştirme A.Ş. diğer tüm girişimlerin geliştirilmesi ve iyileştirilmesi merkezi olarak çalışacaktır.



Şehirde topyekün bir eğitim seferberliği ve bilinç seviyesinin artırılması. Sanayinin dönüşüme hazırlanması, yol haritalarının oluşturularak uygulamaya geçişin kolaylaştırılması. Diğer projelerin geliştirilmesi, yereli ulusal ve global işbirliklerinin yürütülmesi.



E-mobiliteye geçiş süreci, elektrikli araç kiralama platformu kurularak işletilmesi, bireysel ve kurumsal elektrikli araç satışı ve kiralama hizmetleri sunulması. En uygun şarj altyapısının geliştirilmesi.



Yenilenebilir enerji yatırımı projeleri geliştirilmesi, bu projelere yatırım yapılması, yap-işlet-devret modeli ile şehirde daha çok yenilenebilir enerji santralinin devreye alınmasının sağlanması



Türkiye'nin ilk karbon nötr sanayi bölgesinin geliştirilmesi, bu bölgede yeni çevresel teknik ve teknolojilerin uygulanması, bu modellerin şehre mal edilerek, yaygınlaşmasının sağlanması. Çalışan ve verimlilik odaklı yeni bir modelin hayata geçirilmesi.



Türkiye'nin ilk karbon nötr kasabasının geliştirilmesi, burada yeni çevresel teknik ve teknolojilerin uygulanması, bu modellerin şehre mal edilerek, yaygınlaşmasının sağlanması. Yatay mimaride sosyal ve insan odaklı yeni bir yaşam modelinin hayata geçirilmesi

Esinlendiklerimiz;

Kasaba
Geliştirme
Konseyi



Ölçülebilir Reel
Hedefler



Fujisawa SST Council List

The Fujisawa Sustainable Smart Town is a town building project promoted by the Fujisawa SST Council.



%70 Oranında
CO2 Azaltımı



Environmental targets

CO₂ 70% reduction

We aim to achieve significant reductions in carbon dioxide (CO₂) emissions for the entire town through the installation of solar panels, storage batteries, and energy-saving equipment for detached houses, facilities, and shared areas.

* We aim to achieve virtually zero CO₂ emissions for detached houses.

① VS. 1990

[Guidelines]

Proposals for the Town

Project Design Guidelines

Guidelines for project promotion processes

%30 Daha Az Su
Kullanımı



Energy target

Water consumption

30% reduction

We will minimize water consumption across the entire town by installing water-saving products and making maximum use of rainwater.

② Comparisons with the equipment generally used in 2006.

Design and Development of the Entire Town

Town Design Guidelines

Town development guidelines
Environment creation guidelines

%30 Yenilenebilir
Kullanımı



Renewable energy usage

over 30%

Throughout the entire town, we will make effective use of energy generated through technologies such as a community solar power generation system installed on land for public use. Together with solar panels to be installed on houses, facilities and public zones, we will cover over 30% of energy used in the entire town with renewable energy sources.

Acil Durumlarda
72 Saatte İyileşme



Safety and security target (CCP)

Lifeline maintenance 3 days

CCP (Community Continuity Plan) is a plan designed to remain in effect until the recovery of normal conditions in the event of emergencies. This is a challenging new attempt to implement the concept of BCP (Business Continuity Plan: action plan for companies to ensure the continuity of their businesses in emergency situations) into a town-creation project. For example, we are extending medium-pressure gas pipes right into the middle of the town to ensure that it can remain strong in the face of disasters. Our aim is to lay down a comprehensive emergency structure to maintain sufficient washing water, food, drinking water, manhole toilets, and convertible cooking benches that can last until normal conditions are reestablished.

Sustainable Management

Community Design Guidelines

Lifestyle guidelines
Emergency guidelines





Care & Support, Capital, Incubation and Environmental Protection Services

SQUARE Mobility

The SQUARE Mobility is a total mobility service base offering eco-friendly transport. You can rent electric vehicles (EVs) and electric-assisted bicycles and access various insurance consultation desks.



Meet, Incubate and Initiate SQUARE Center (Cafe & Kitchen)

We will create an interactive communication café, featuring a system promoting the development of a community of FSST and neighborhood residents, creation and preparation of recipes utilizing home appliances and serving dishes. You can flexibly use the café for working space or events.



Ideas for Better Living SQUARE Lab KURA_THINK

This is a place where ideas are proposed for new lifestyles and for better living through home appliances. In addition to experimenting with new home appliances, community services and living services are provided and events are held on the themes of food, health, and beauty.



Meet, Incubate and Initiate SQUARE Center

This is Fujisawa SST's comprehensive communication base. This is a place for showing the town's appeal points and lifestyles to companies and government bodies around the world through video presentations or other tools. Partnerships will be created and new businesses and services will be incubated.



Discussing the town's future SQUARE Future

This is a place where diverse stakeholders can gather, share issues with the town and discuss its future. A wide range of events, workshops and seminars will be held throughout the year.



Town management office SQUARE Office

This is the base of Fujisawa SST Town Management Company. It also serves as the Community continuity planning (CCP) center in charge of planning and implementing disaster recovery measures in the event of emergency.

Ana Bulvar

Mobilite Merkezi

Kafeler

Think-Tank Merkezi

Sunum Merkezi

Gelecek Tasarım Merkezi

Yönetim Ofisi

Sağlıklı Yaşam Bulvarı

Gym

Spa

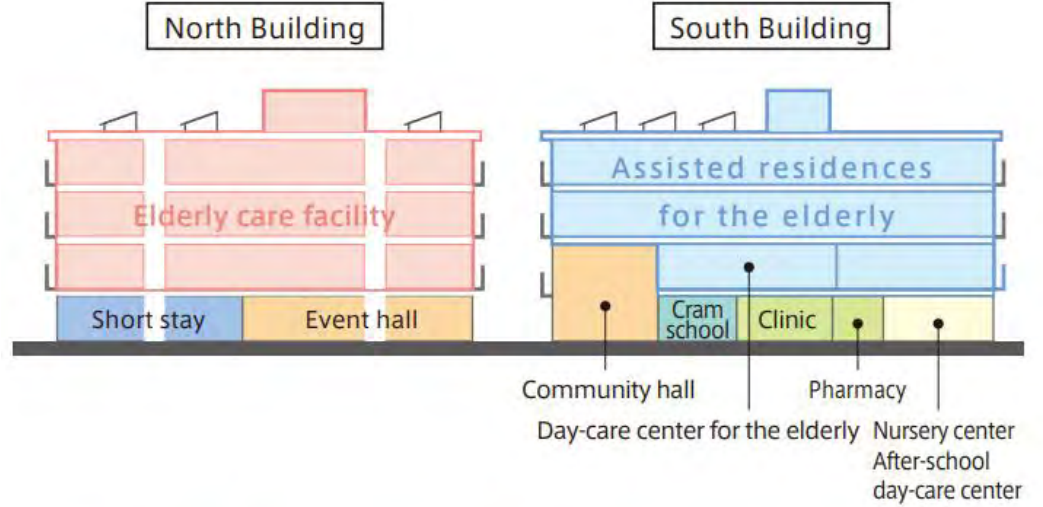
Yaşlı Bakımevi

Eczane

Hemşirelik Merkezi

Dershane

Etkinlik Merkezi



Wellness SQUARE, North Building



Wellness SQUARE, South Building



Lojistik Bulvarı

Uzaktan Kargo Takibi
Kargo Teslim Noktası



SHONAN T-SITE

Building a base for making the rest of the world aware of new lifestyles developed in this town

SHONAN T-SITE

The SHONAN T-SITE commercial facility is not just for selling goods. It's not a site just for selling goods. It's a base for inspiring residents and visitors to the Shonan area, nurturing new lifestyles, and making this lifestyle known to people outside the town. Lifestyles born in the town called Fujisawa SST have great potential to affect lifestyles in Japan, and furthermore, in the world.

AVM
Kütüphane
Çocuk Laboratuvarı
Hanımlar için Ortak Mutfak



Çocukların
Eğitimi



Ultimate cozy design A complex cultural facility recommending Shonan lifestyles

The SHONAN T-SITE is not just for residents of Fujisawa SST. We aim to build a site that showcases Shonan culture, where visitors to Shonan will drop by before they go home. This includes ultimate cozy design surrounded by the natural environment of the Shonan area, shops, products, and a wide range of other ideas, which will promote healthy Shonan lifestyles.



The SHONAN T-SITE will provide goods and spaces where individuals will be able to enrich their lifestyles.

At shops in the SHONAN T-SITE, only goods that appeal to persons of sensibility are selected and sold. For example, a wide range of books or magazines that provide new information on hobbies, jobs, cooking, child-rearing, and so on are selected. In addition, visitors can order coffee and read books or magazines before buying or enjoy lunch cooked with locally produced food at the slow food restaurant. Everyone can enrich their lifestyles with a visit to the SHONAN T-SITE.



Epoch-making action, anticipating the needs of the age and continuing sustainable evolution

People's demands for goods and services change as culture changes and develops. Instead of responding to these changes by re-fitting its shops, the SHONAN T-SITE will think about new lifestyles together with shop owners in the T-SITE before changes occur, always making proposals for lifestyles that are ahead of the times. Cooperation between shops may also offer extra value...







UNITED NATIONS
INDUSTRIAL DEVELOPMENT ORGANIZATION



WORLD BANK GROUP



Deutsche Gesellschaft
für Internationale
Zusammenarbeit (GIZ) GmbH

1. Aşama
Hedefler ve Ana
Stratejik Planın
Belirleme

2. Aşama
Saha Analizi ve
İhtiyaç
Değerlendirmeleri

3. Aşama
Konsept Proje ve
Çevre Tasarımı

4. Aşama
Tematik Planlama
ve Uygulama
Projesi Hazırlama

5. Aşama
Detaylı Master
Plan ve Uygulama
Safhası

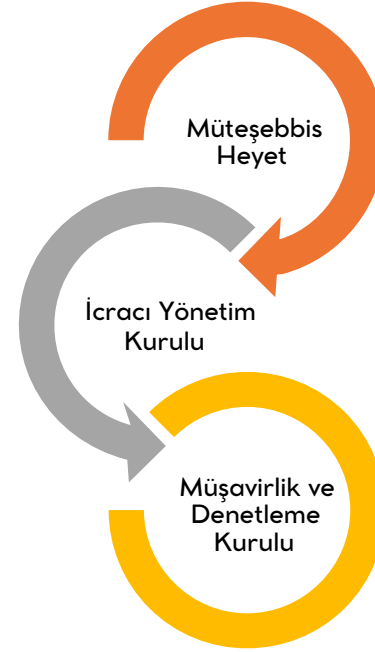
Ekolojik Sanayi Bölgesi Performans Kriterleri

Ekonomik Performans Kriterleri

Çevresel Performans Kriterleri

Sosyal ve Eğitime İlişkin Performans Kriterleri

Yönetimsel Performans Kriterleri



Sanayi Bölgesi
Profesyonel
Yönetimi



KONYA  KARBON
SERTİFİKASYON

KARBON NÖTR ŞEHİR KONYA

106
MÜSİAD
GENEL İDARE KURULU